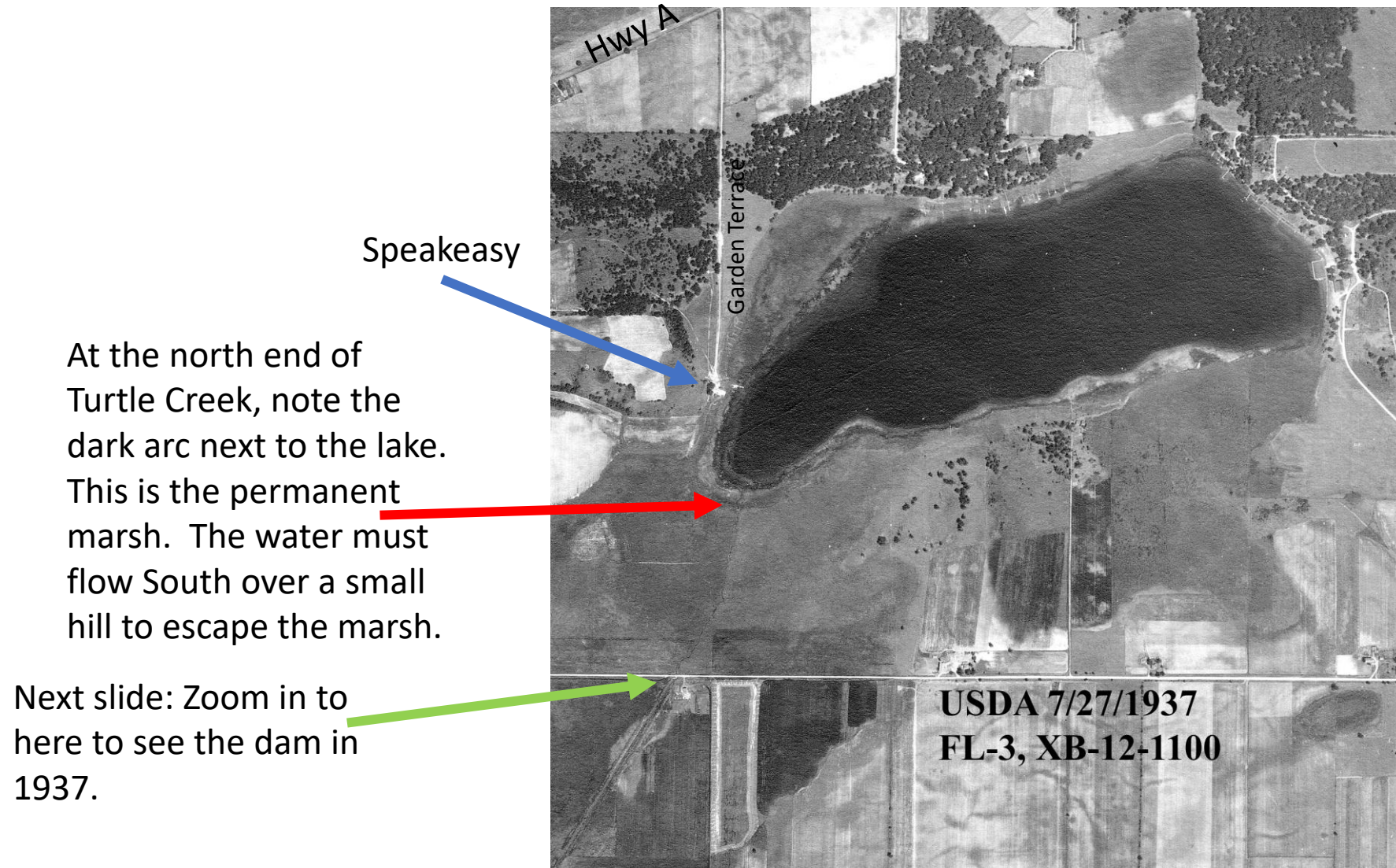
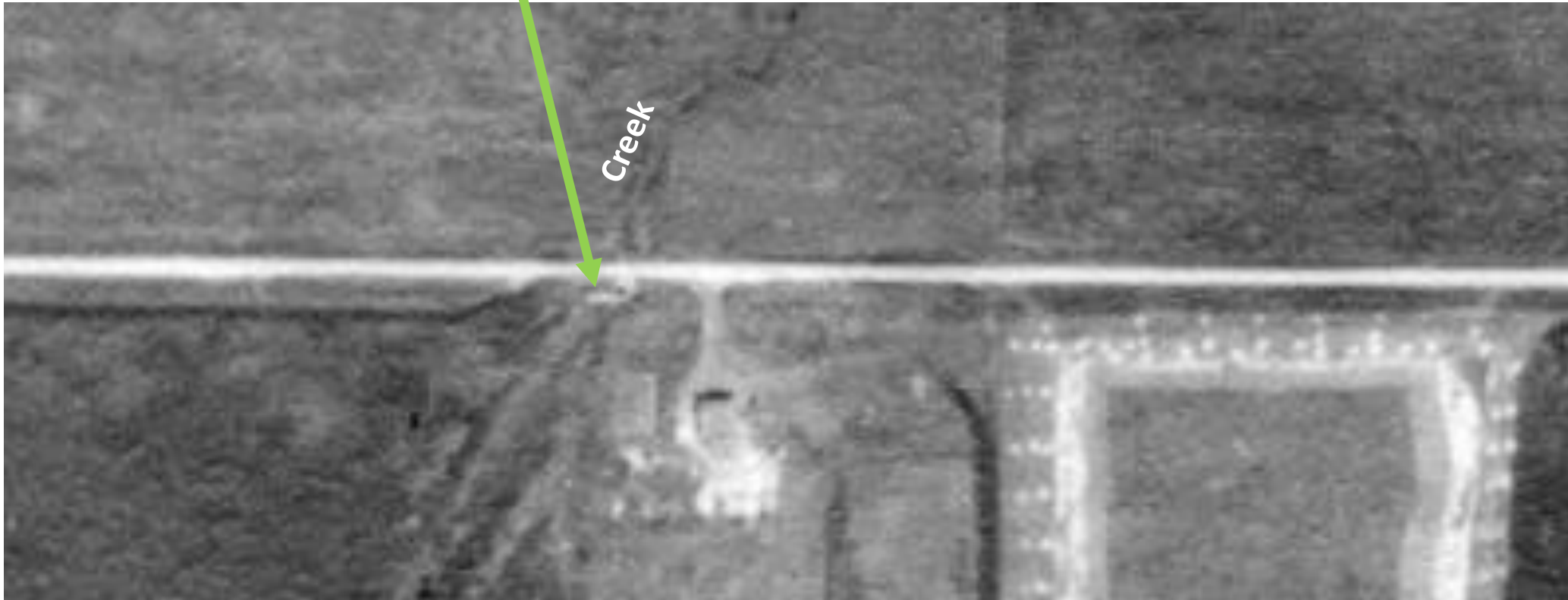


Evolution of Dam 1533 and
the Breach in Turtle Creek
1937-2018

Turtle Lake in 1937. Fewer trees and houses, no duck pond, no breach in the creek.



1937: Dam 1533 is south of Turtle Lake Road.
The road is white because it is not paved.



9 ft. wide concrete dam North of the Road

Looking Northeast. First used spring 1942. Photo by AECOM 6/7/14.

Before the breach in the creek, water used to sometimes flow down the creek, over the spillway, and under the road through the 30 inch culvert.



Looking Southwest at the dry 30" culvert inlet

Water over the spillway fills this “drop box” or “drop inlet”. AECOM 6/7/14.



Pat Carrol Telcon: Fall 2019.

PAT: “When I moved to the lake in the 1970s, I found there was a game: A homeowner at the lake, now deceased, would put a large board on top of the concrete dam. The water then would flood the nearby farmlands and the farmer, in disgust, would remove the board.”

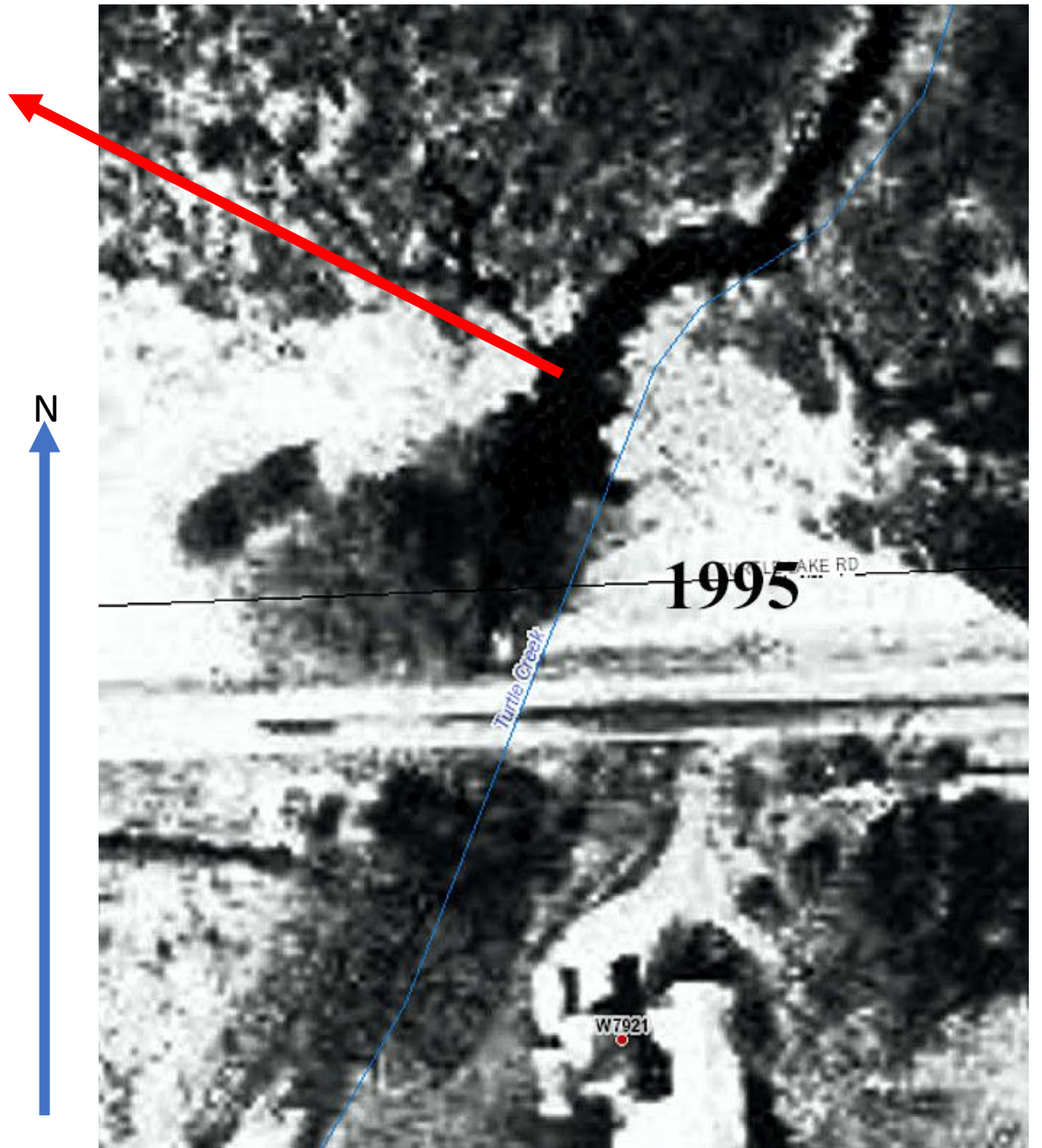
George: In 1979, the WDNR found the board and perhaps put a stop to the practice. Maybe not.

Breach forming 1995.

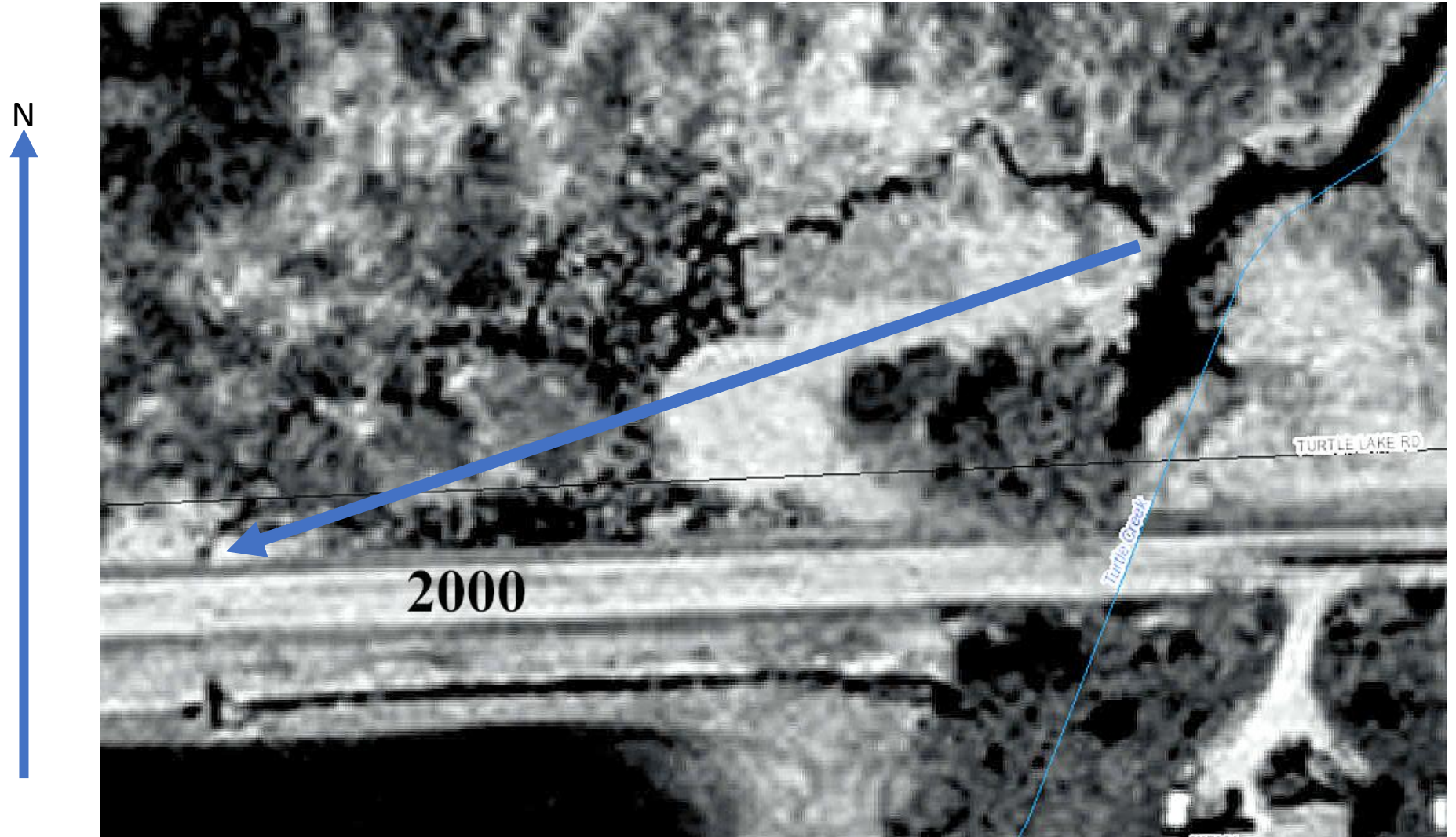
Initial flow of the breach flows Northwesterly.

At the road:

Note trees growing above the concrete dam.



2000: Breach reached Culvert in road. Dam is still wet.



9/23/2002 New definition of Dam 1533

- DAM 1533 is now the natural rise in the creek near the lake. The concrete dam at the road is almost always dry. The new official definition is recorded on this date by DNR engineer “RAN”.

BREACH FULLY FORMED. 3/16/2018.

All the surfaces shown here are well below the natural dam near the lake. All the water shown was way upstream “over the dam”.

