

# Evolution of the Channel

1937-2018

Some images are better than others.

# What lowered Turtle Lake for decades after 1965?

This slide show uses historical aerial photographs from 1937 to 2018.

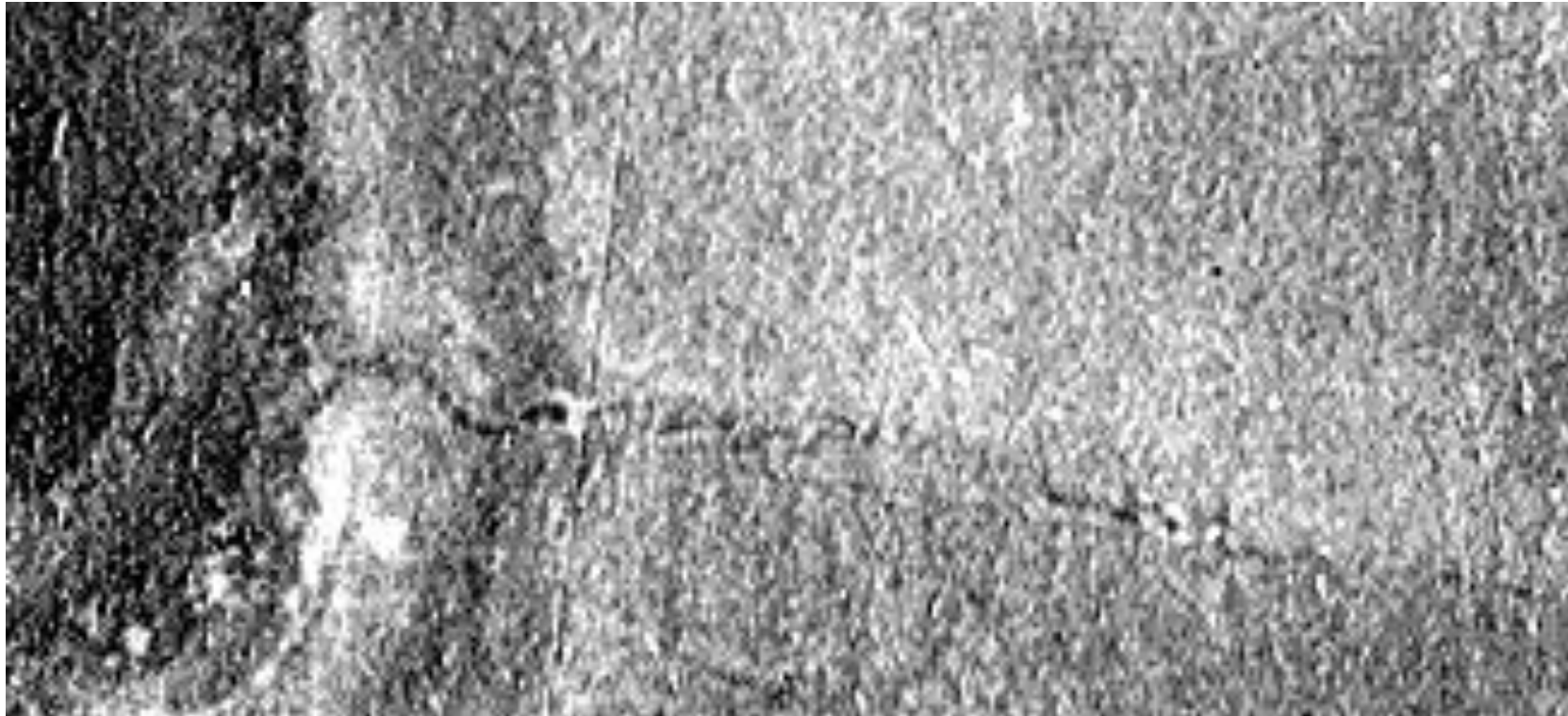
We look at Turtle Creek draining Turtle Lake. Flow to the right.

The Duck Pond first appears in a photo from 1963. Turtle Creek has been widened and possibly deepened.

By 2010, the creek channel and the duck pond have grown in with thick vegetation, slowing the drainage of the lake.

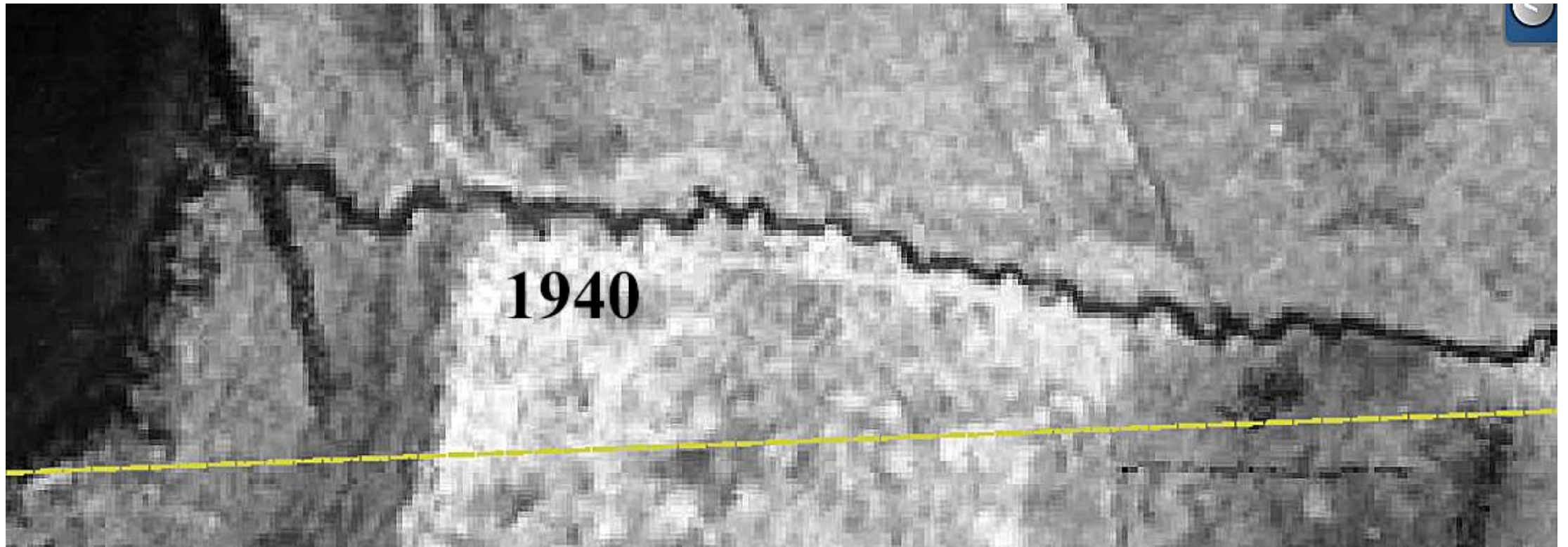
Note: The pictures have North to the left so the creek drains left to right.

(North is to the left.)  
1937 Channel not navigable.

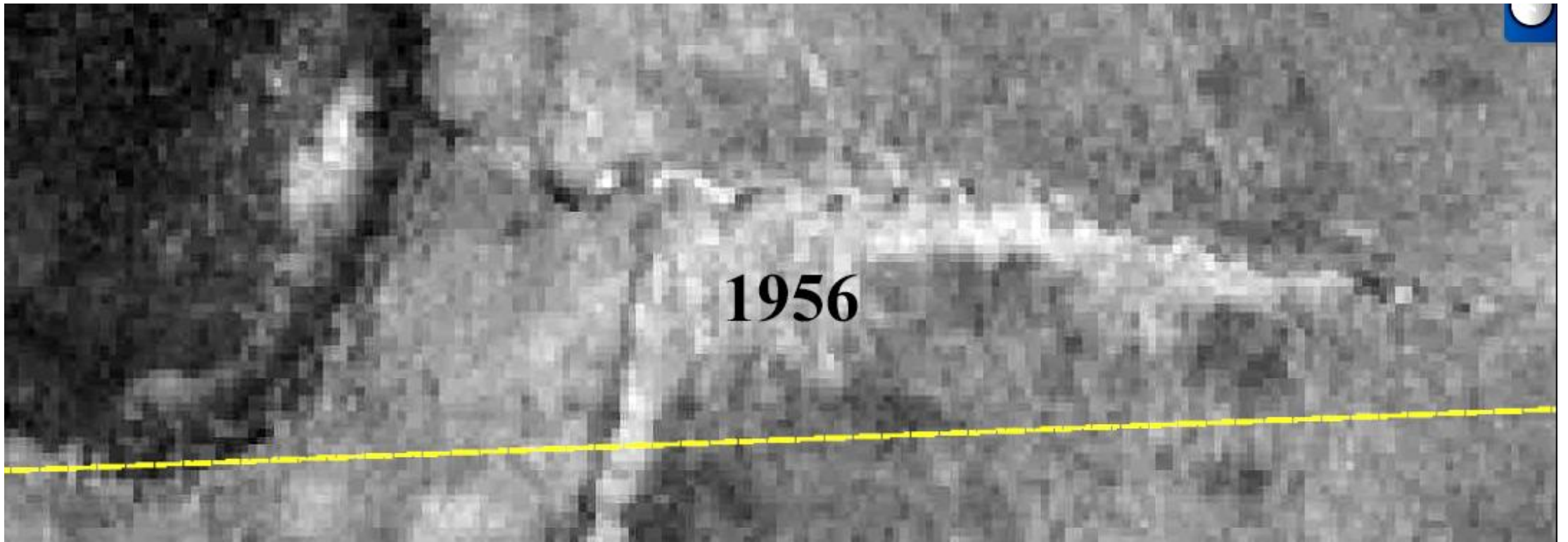


1940: (Yellow line is a section line.)  
Maybe can boat down the creek.

N ←

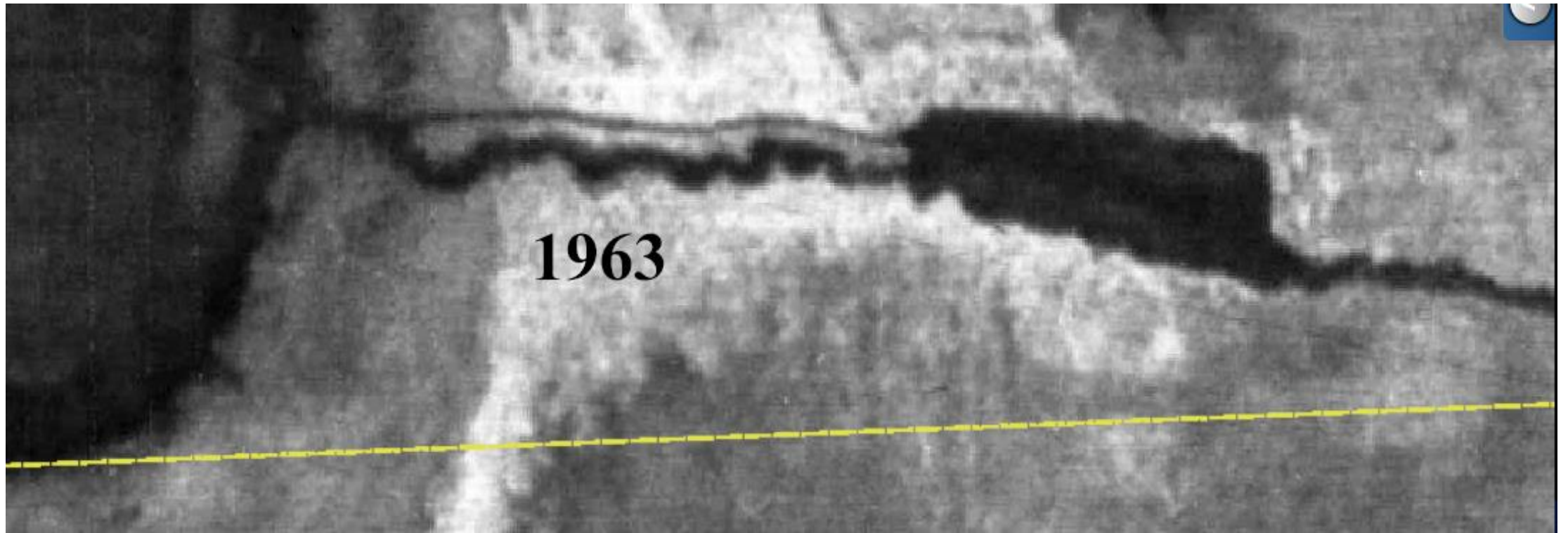


1956: No Duck pond yet. Frank Cernoch owns the property until 1968.

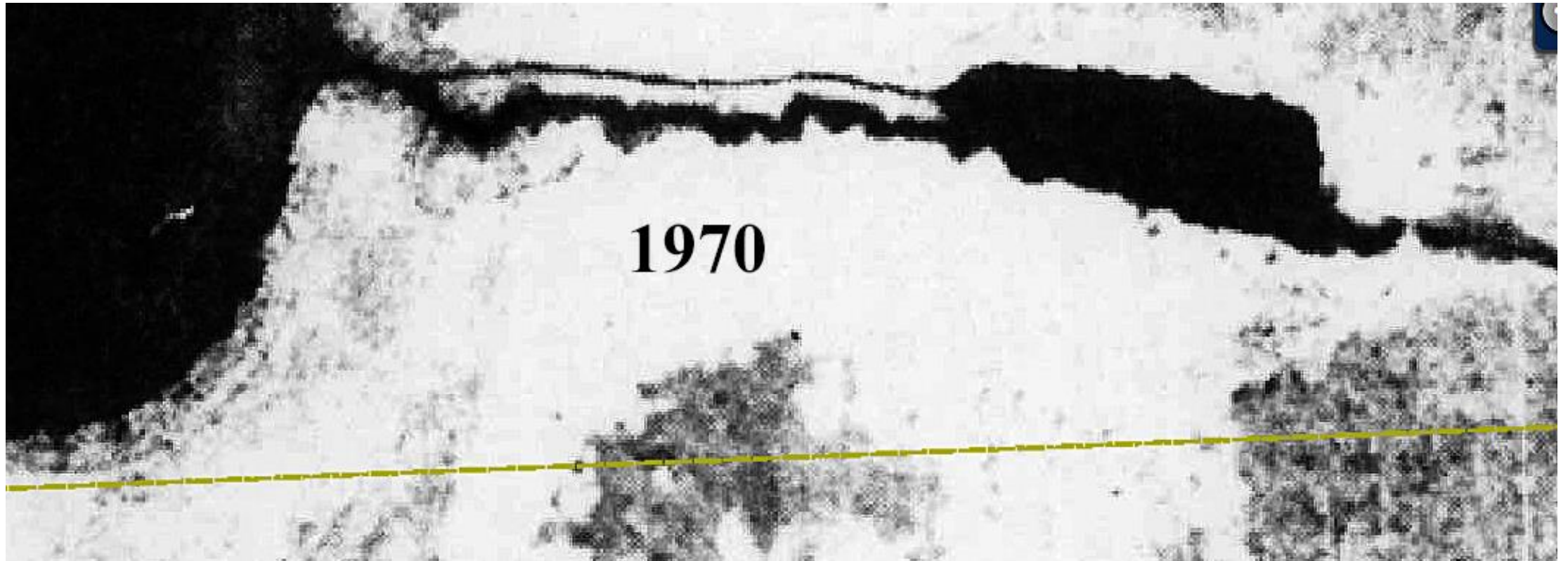




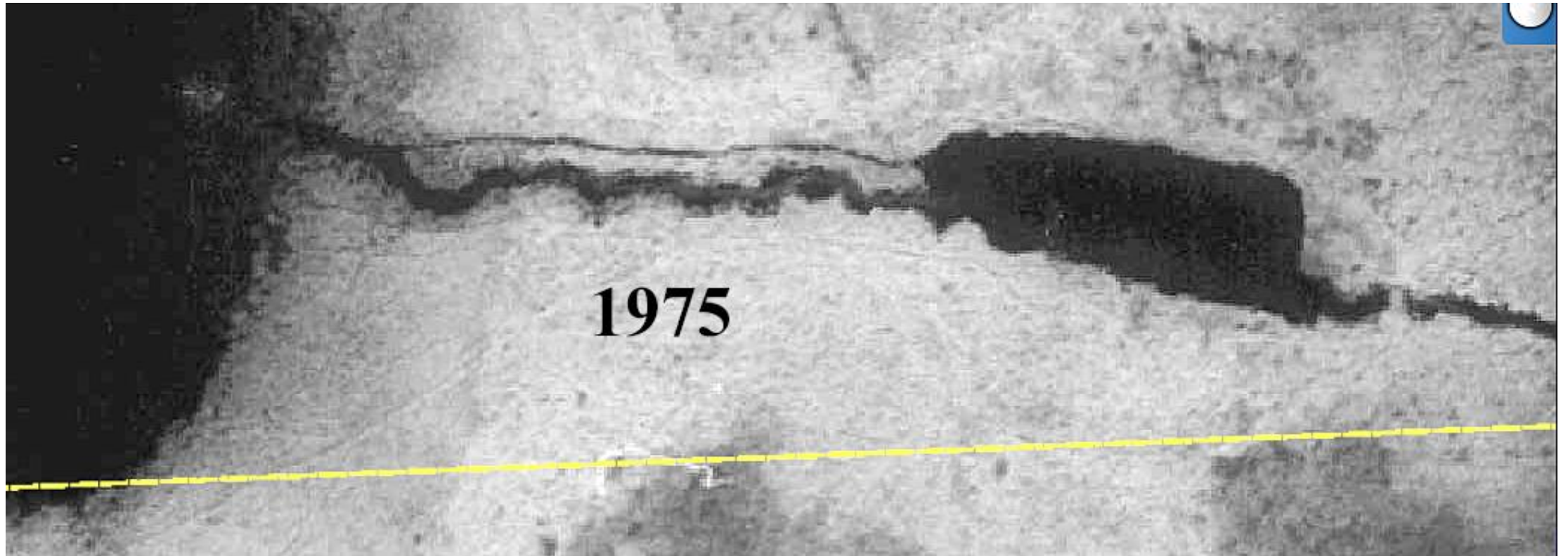
1963: Pond dredged out, channel widened by Frank Cernoch? (deeper also?)



1970: Frank Cernoch sold the property in 1968.

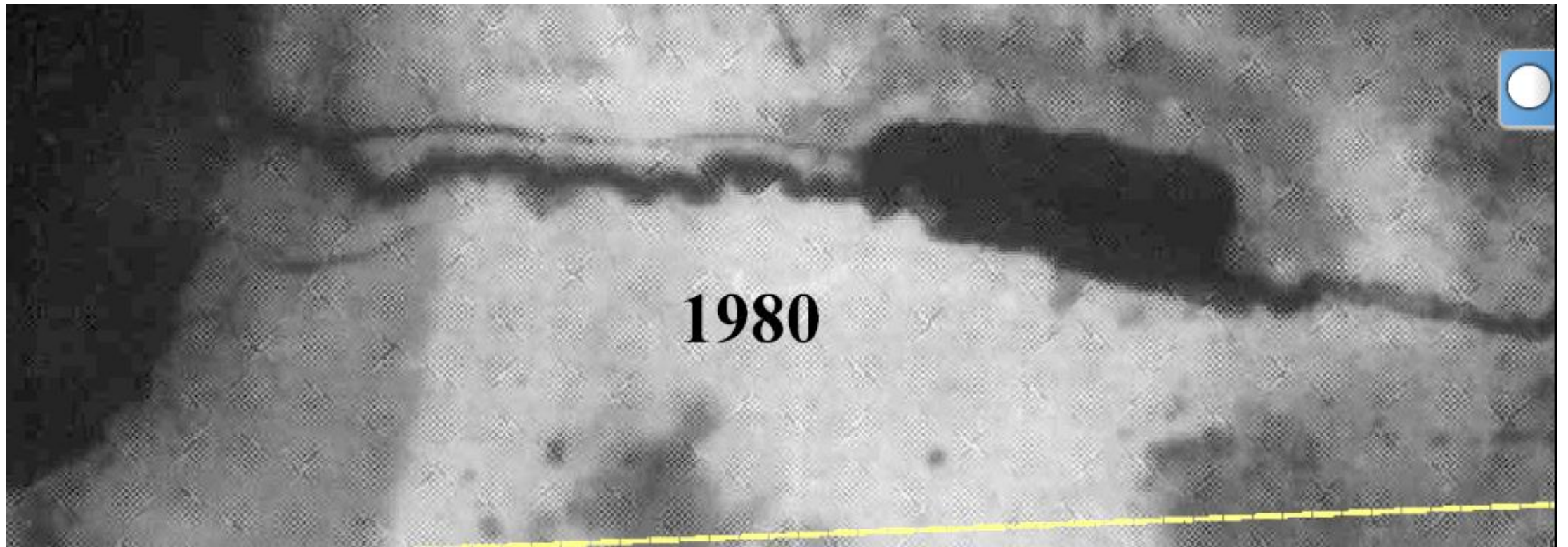


# 1975 Growth in the channel and pond?

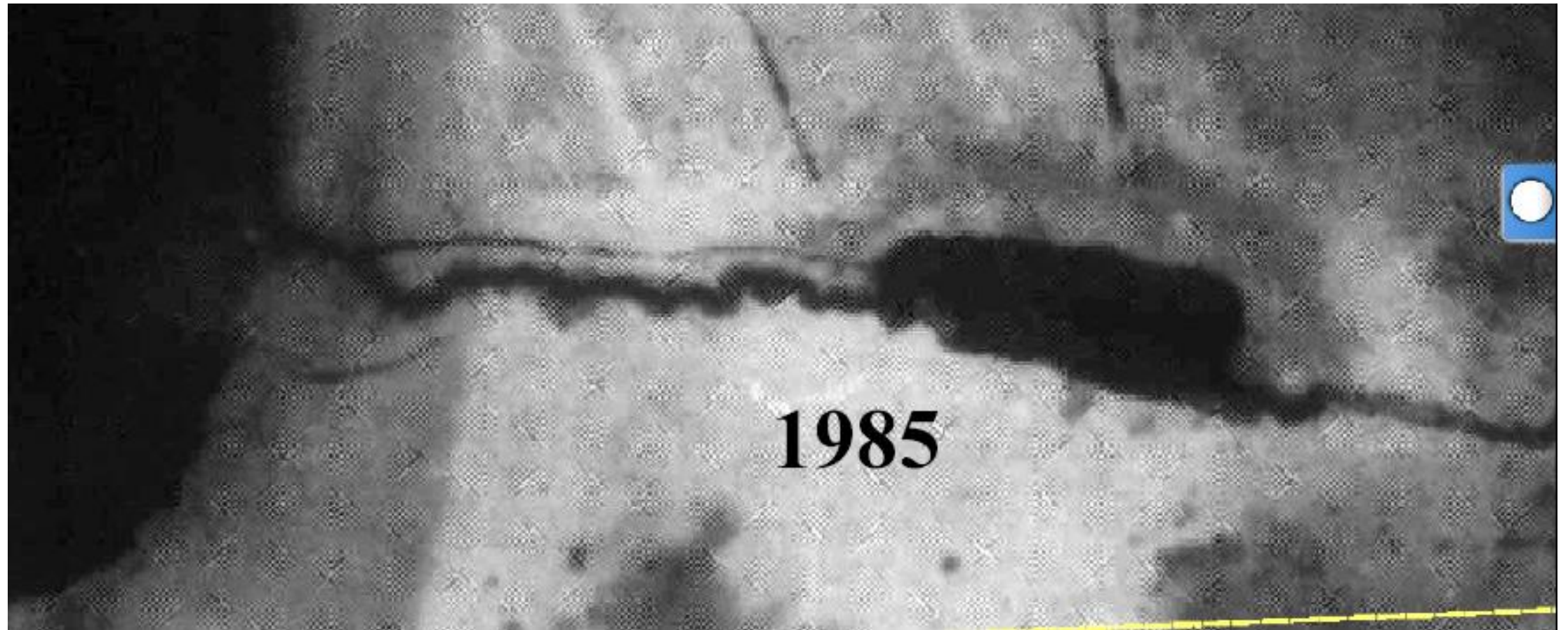




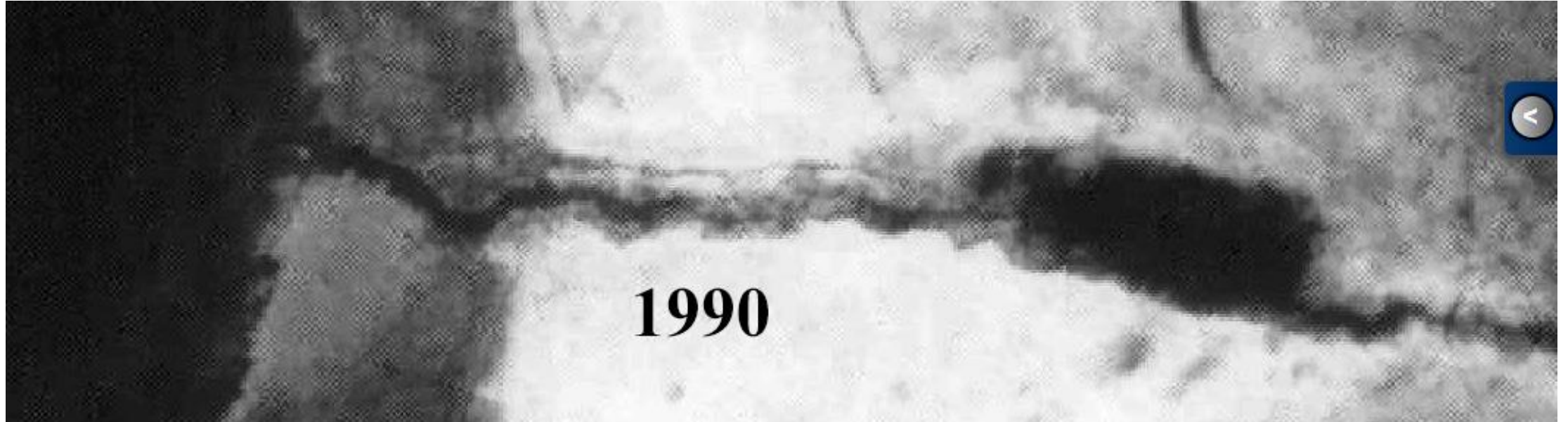
1980 fuzzy picture



1985

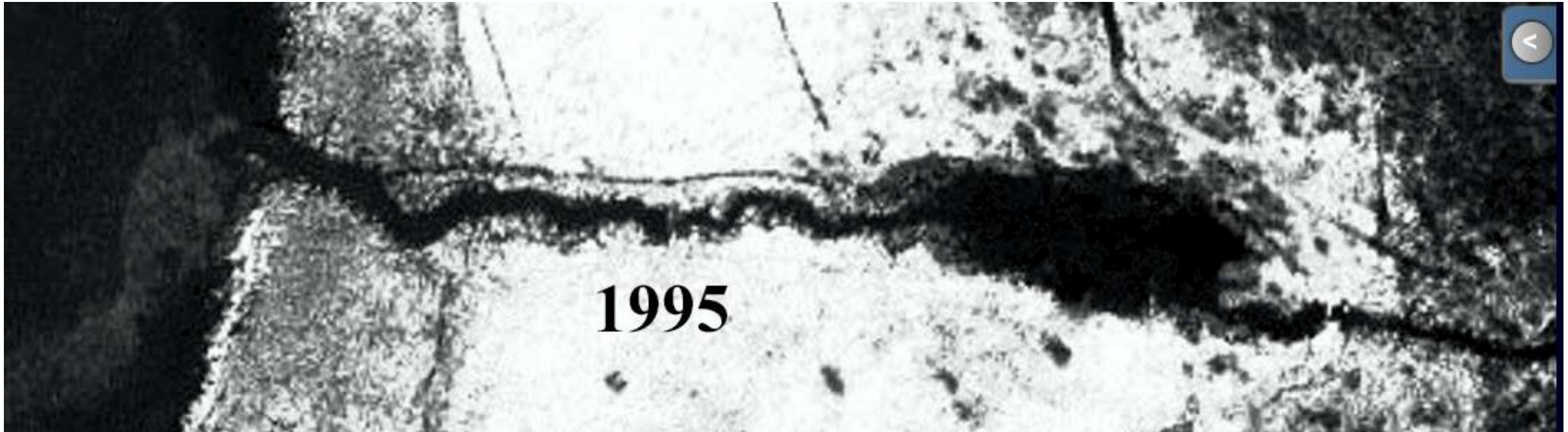


1990



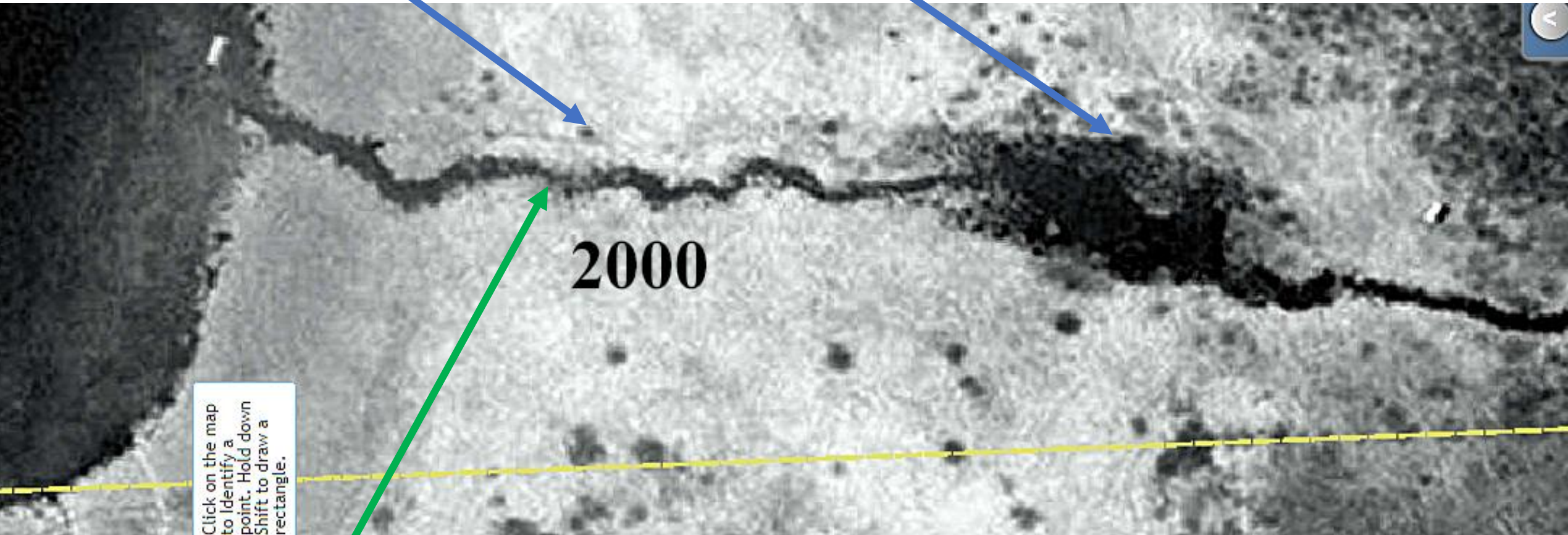


1995 channel still navigable.





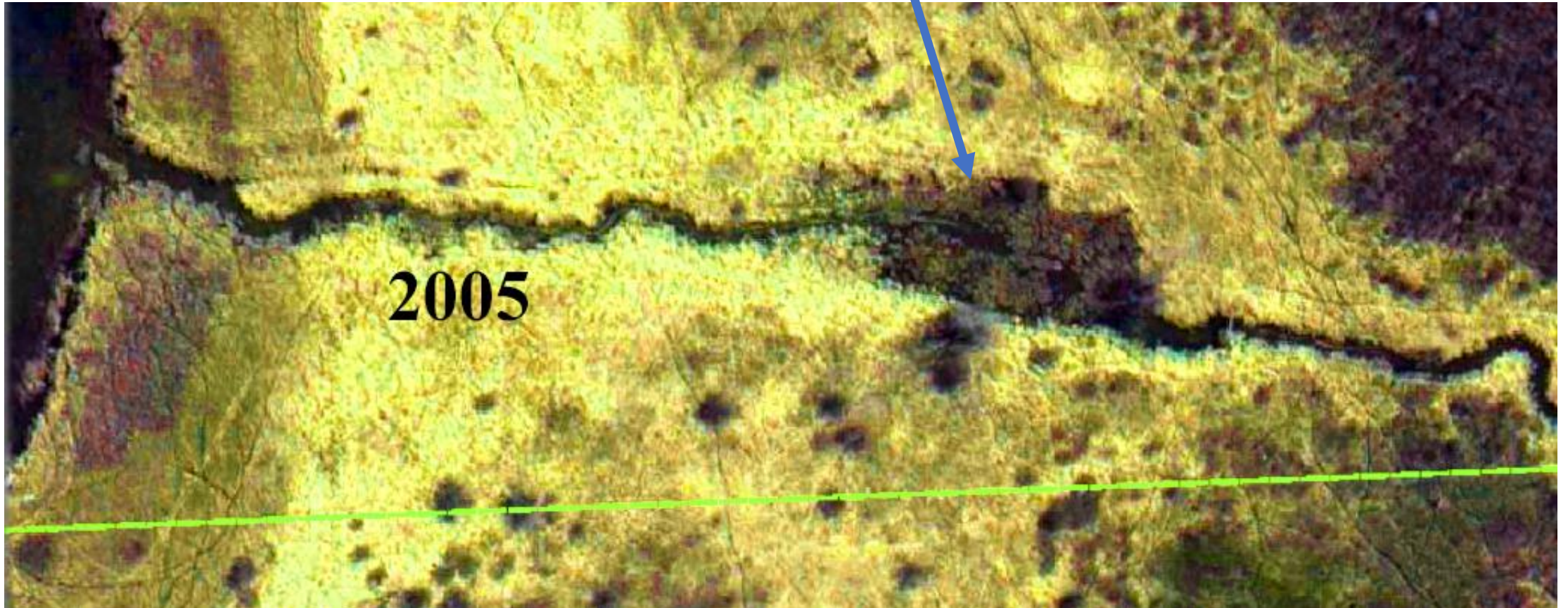
2000: A Bush is growing close to the natural dam. The Pond is growing in.



Location of WDNR dam 1533?

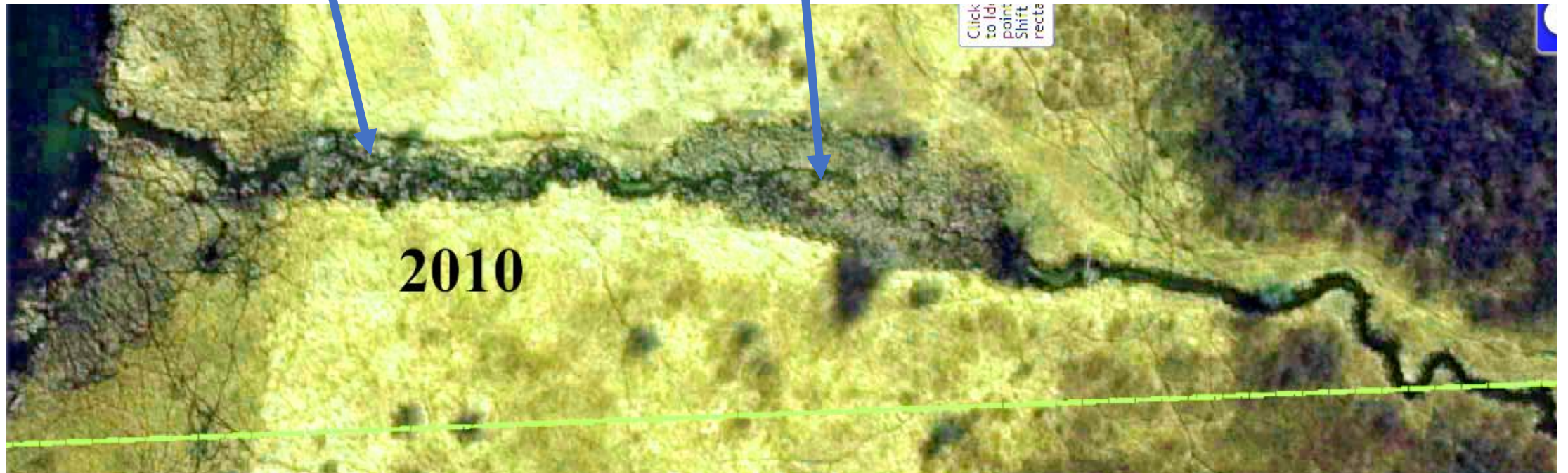


2005 Pond almost entirely grown in.





2010 Channel and pond grown in.





2015: More growth. (And the pictures get better.) Note trees at the edge of the pond.





2018: Growth toward the lake, no passage.  
The tall trees at the duck pond are easily seen from the lake.



Deeper Water ← → Shallower water.

The Darker Area between the Lake and the wetlands is the permanent marsh. The bottom is rising to the right.  
The highest point is about at the “t” in “200 Feet”—where the wetland gets a lighter color and the creek starts downhill.